



**Cat.Nr. 30.3301.02**  
Temperature sensor with waterproof cable sensor  
Monitors e.g. the temperature of aquarium, freezer or fridge, pool or pond.



**Cat.Nr. 30.3305.02**  
Temperature humidity sensor with water detector  
Monitors the room climate and warns you of water leakage, e.g. in case of a defective washing machine or flooding.



**Cat.Nr. 30.3303.02**  
Temperature humidity sensor  
Informs you at any time about temperature and humidity outside or in different rooms, e.g. in the bedroom, children's room, cellar or storage room.



**Cat.Nr. 30.3304.02**  
Temperature humidity with waterproof cable sensor  
Monitors the temperature and humidity of the environment, outside or inside, and an additional temperature with the cable sensor e.g. in the pond or pool, aquarium or freezer.



**Cat.Nr. 30.3311.02**  
Door and window contact sensor  
Ideal for monitoring open doors and windows throughout your home.



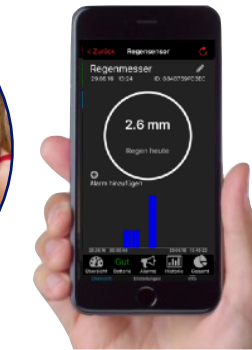
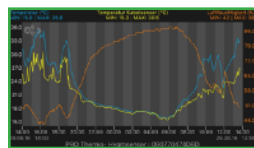
**Cat.Nr. 30.3310.02**  
Temperature humidity sensor with pool sensor  
Monitors outside and inside the temperature and humidity of the environment and at the same time the water temperature in the swimming pool, whirlpool or garden pond, via the pool transmitter.



### Cat. Nr. 30.3302.02

Temperature humidity sensor with professional temperature cable sensor for the monitoring of the room climate and the simultaneous temperature monitoring of cooling and air conditioning units or liquids via the precise cable sensor with extended measuring range.

PR+



### Cat. Nr. 30.3306.02

Rain gauge  
With this rain-gauge you can determine the amount of precipitation easily and exactly. This is important for gardening and agricultural purposes, and interesting for all those who want to know more about nature.

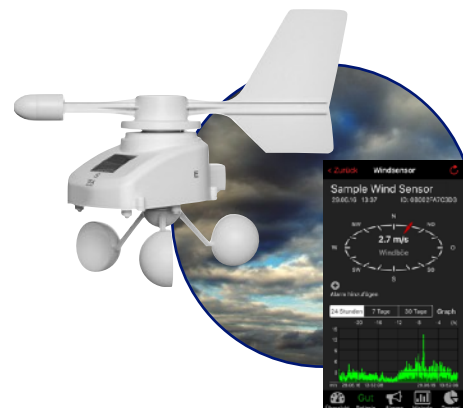
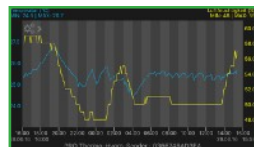
PR+



### Cat. Nr. 30.3312.02

Professional temperature humidity sensor for professional monitoring of temperature and humidity in storage or living rooms, greenhouses, server and other air-conditioned rooms or outdoor areas.

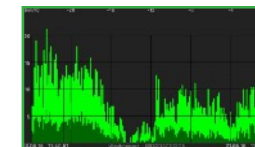
PR+



### Cat. Nr. 30.3307.02

Wind sensor  
Monitors accurate the wind direction and speed at the installation site. This is interesting for many outdoor activities like air and water sports and for the agricultural and construction sector.

PR+



### Cat. Nr. 30.3313.02

Professional temperature sensor with waterproof cable sensor for professional monitoring of the air temperature and a second temperature via the waterproof cable sensor for use e.g. in storage rooms, laboratories, industry, pharmacies or in air-conditioned rooms. This transmitter is also compatible with the Observer platform.

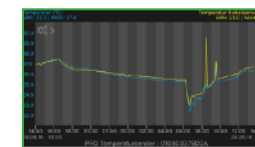
PR+



### Cat. Nr. 30.3308.02

Temperature sensor with waterproof cable sensor  
Monitors the air temperature on the outside or inside, and a second temperature e.g. in the garden pond, pool, aquarium or cooling unit at the same time via cable sensor.

PR+





#### Kat.Nr. 30.3060.01

##### KLIMA@HOME

Ideal for monitoring room climate and 3 other measuring points for temperature and humidity, e.g. children's room, outdoor area or the greenhouse. Measurements are displayed directly on the display and in the WeatherHub app.



External sensor  
e.g. 30.3303.02\*



#### Kat.Nr. 30.5043.01 PRO+

##### COSY RADAR

For monitoring of the temperature and humidity, by the simultaneous checking of the outdoor climate with the temperature and humidity transmitter, shows you concrete recommendations for the active improvement of the room climate.

*„Room air noticeably too humid. Airing doesn't improve the indoor environment. Increase temperature in cool rooms. Active dehumidification. Mould hazard!“* **Info**

#### Standard features in the WeatherHub app

- Overview of all current measurements of the sensors
- Alarm settings
- Push notification in case of an alarm
- Battery status of the sensors
- Set names of the sensors
- Main settings of the app



#### Additional functions in the WeatherHub app

Functionality, depending on the transmitter (see table)

- Graphic functions
- Max.-min function
- Export function
- Graphic history
- Overview function



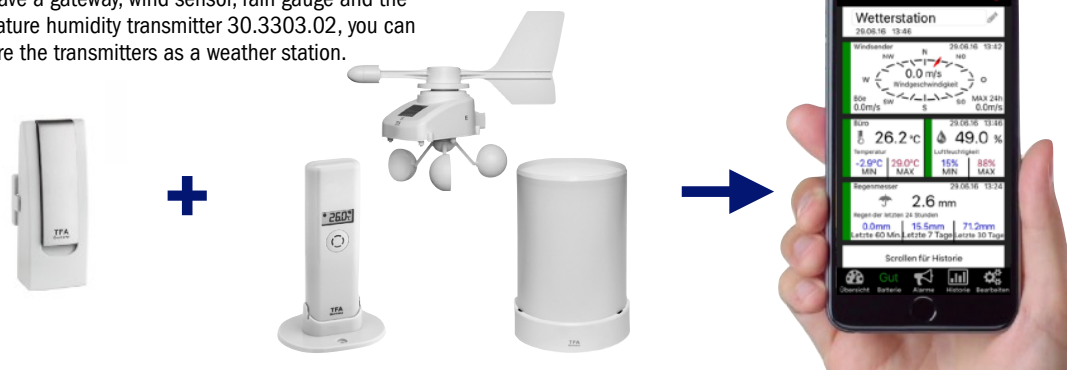
#### Additionally compatible with the WeatherHub Observer platform

- Retrieval of the data via the browser-based Observer platform
- For professional monitoring and documentation of climatic data
- Complete automation of monitoring
- Many different options of alarming (by e-mail)
- The platform is free of charge and requires no additional usage fees or subscription costs
- Works with Windows, Apple and Linux Computers as well as Android, iOS and Windows Phone



#### Combination of sensors to create the weather station

If you have a gateway, wind sensor, rain gauge and the temperature humidity transmitter 30.3303.02, you can configure the transmitters as a weather station.



\* (works with WeatherHub temperature humidity transmitters with the exception of 30.3305.02)



	30.3301.02	30.3302.02	30.3303.02	30.3304.02	30.3305.02	30.3306.02	30.3307.02	30.3308.02	30.3310.02	30.3311.02	30.3312.02	30.3313.02	30.3060.01	30.5043.01 (+ external sensor)
Temperature	✓	✓	✓	✓	✓			✓	✓		✓	✓	✓	✓
Humidity		✓	✓	✓	✓				✓		✓		✓	✓
Rain gauge						✓								
Wind sensor							✓							
Contact sensor										✓				
Pool sensor									✓					
Temperature cable sensor	✓ (ap. 100cm)	✓ (ap. 150cm)		✓ (ap. 150cm)				✓ (ap. 100cm)				✓ (ap. 140cm)		
Water detector					✓ (150cm)									
Compatible with WeatherHub OBSERVER		✓						✓			✓	✓		
Additional functions in the app		<b>PRO+</b> • Graphic function • Max.-min function • Export function				<b>PRO+</b> • Graphic function • Graphic history • Overview function	<b>PRO+</b> • Graphic function • Max.-min function • Export function	<b>PRO+</b> • Graphic function • Max.-min function • Export function			<b>PRO+</b> • Graphic function • Max.-min function • Export function	<b>PRO+</b> • Graphic function • Max.-min function • Export function		<b>PRO+</b> • (vent. recommendations) • Max.-min function • Graphic function
Data storage	3 months	18 months	3 months	3 months	3 months	3 months	3 months	3 months	3 months	up to 40 contacts	3 months	3 months	3 months	3 months
Measuring range temperature sensor		-39,9 ... +59,9°C -39,8 ... 139,8°F	-39,9 ... +59,9°C -39,8 ... 139,8°F	-39,9 ... +59,9°C -39,8 ... 139,8°F	-39,9 ... +59,9°C -39,8 ... 139,8°F			-30 ... +60°C -22 ... 140°F	-39,9 ... +59,9°C -39,8 ... 139,8°F		-39,9 ... +59,9°C -39,8 ... 139,8°F	-30 ... +60°C -22 ... 140°F	-39,9 ... +59,9°C -39,8 ... 139,8°F	-39,9 ... +59,9°C -39,8 ... 139,8°F
Measuring range temperature - base station													-10 ... +60°C 14 ... 140°F	
Measuring range humidity		1 ... 99% rel. H.	1 ... 99% rel. H.	1 ... 99% rel. H.	1 ... 99% rel. H.				1 ... 99% rel. H.		1 ... 99% rel. H.		1 ... 99% rel. H.	1 ... 99% rel. H.
Measuring range cable sensor	-29,9 ... +59,9°C -21,8 ... 139,8°F	-50 ... +110°C -58 ... 230°F		-39,9 ... +59,9°C -39,8 ... 139,8°F	dry / wet			-30 ... +60°C -22 ... 140°F				-30 ... +60°C -22 ... 140°F		
Measuring range pool sensor									0 bis +60°C 32 bis 140°F					
Measuring range rain gauge						0 bis 300 mm/h								
Measuring range wind sensor							0 bis 50 m/s 0 bis 180 km/h							
Transmission interval to the gateway	7 minutes	3 ½ minutes; immediately transmission with significant change	7 minutes	7 minutes	7 minutes	7 minutes	7 minutes	7 minutes	7 minutes	immediately at opening/closing	7 minutes; immediately transmission with significant change	7 minutes	7 minutes	10 minutes; immediately transmission with significant change
Max. Reichweite Sender zu Gateway (868 Mhz)	100m	200m	200m	200m	200m	100m	100m	100m	100m	100m	200m	200m	100m	100m (COSY RADAR)
Batteries (not inclusive)	2 x 1,5V AAA	2 x 1,5V AAA	2 x 1,5V AAA	2 x 1,5V AAA	2 x 1,5V AAA	2 x 1,5V AA	Solar	2 x 1,5V AAA	4 x 1,5V AA	6 x LR 44	2 x 1,5V AA	2 x 1,5V AAA	9 x 1,5V AA	2 x 1,5V AAA (COSY RADAR)
Special features		Accuracy cable sensor ± 0,5°C									Swiss-Precision Sensor ± 3% @ 20...90%		With 3 sensors + display unit	With its own display unit